



Kim v. General Motors Corporation  
2001 Chevrolet Suburban  
Rollover  
Quadriplegia



Rittenberg vs. General Motors Corporation  
1998 Chevrolet Suburban  
Rollover  
Fatal





Styles v. General Motors  
1996 Chevrolet Suburban  
Rollover  
Fatal



**Ghazarian v. General Motors Company**  
**2003 Chevrolet Suburban**  
**Rollover**  
**Fatal**



**Shaver v. General Motors Company**  
**2001 Chevrolet Suburban**  
**Rollover**  
**2 Fatalities**





Granger v. General Motors Corporation  
1995 Chevrolet Suburban  
Rollover  
Closed Head Injury

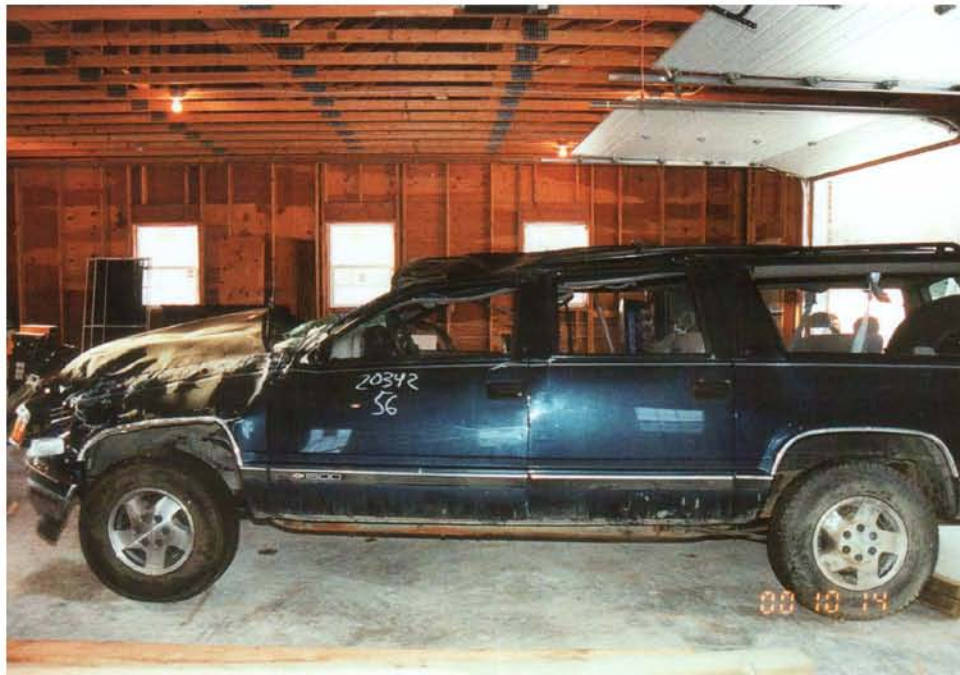


Faulkner v. General Motors Corporation  
1990 Chevrolet Suburban  
Rollover  
Disabling with very gradual improvement



Hurley vs. General Motors Corporation  
2002 Chevrolet Suburban  
Rollover  
1 Fatal, 1 Closed Head Injury





Shifley v. General Motors Corporation  
1995 Chevrolet Suburban  
Rollover  
Head Injury



Guerrero v. General Motors Corporation  
1997 Chevrolet Suburban  
Rollover  
2 Fatal, Head Injury, Arm Injury





Thomas v. General Motors  
1999 Chevrolet Suburban  
Rollover  
2 Fatal



Griesbach v. General Motors  
1999 Chevrolet Suburban  
Rollover  
Quadriplegia